



3 9082 11768 9268



PALLADIUM

LOCAL
HISTORY

REFERENCE

373.744 P
1939



1939

NORTHVILLE HIGH SCHOOL

Northville, Michigan

AUG 09 2011
Northville District Library
212 W. Cady Street
Northville, MI 48167-1560

IN MEMORIAM

Willard Stalter, Paul Regula and Hiram (Bud) Alger started to school with the present graduating class twelve years ago. Along the way they were called home by the master teacher and are now held in tender memory by us. They were especially well liked and their loss to us is deeply felt.



FACULTY

First Row (Left to Right): Mrs. Frank Hawkins; Tisha Brassfield; Mrs. Frances Herrick; G. V. Harrison, Principal; Russell H. Amerman, Superintendent; Gladys Ludwig; Ione B. Palmer; Estelle Griffiths. Second Row (Left to Right): Mrs. Ida B. Cooke; William H. Hensch; Leslie G. Lee; Merle Wheeler; E. C. Mollema; E. V. Ellison; Harry Smith; Kathryn Giltner.

Tisha Brassfield	Mathematics
Ida B. Cooke	Junior High Arithmetic and English
E. V. Ellison	Apprentice Training
Kathryn Giltner	Commercial
Estelle Griffiths	Speech, Geography and English
Grace Hawkins	English
William Hensch	Chemistry and Physics
Frances Herrick	English, Civics, and U.S. History
Leslie G. Lee	Music
Gladys Ludwig	Biology, Gymnasium
E. C. Mollema	Social Science
B. Ione Palmer	French, Latin and English
Doris Reber	Homemaking
Harry Smith	General Science, Gymnasium and Coaching
Merle Wheeler	Industrial Arts
G. V. Harrison	High School Principal
R. H. Amerman	Superintendent



First Row (Left to Right): Jeanne Atchison; Julie Modos; Geraldine Johnston; Janet Stewart; Louise Alexander, Editor; Helen Harper, Advertising; Ruth Frank; Marilyn Cavell; Patricia Klein.
 Second Row (Left to Right): Leslie G. Lee, Advisor; Kenneth Chappell; Cecil Nirider, Circulation; William Schoultz, Advertising; Jack McCrumb, Advertising; John Angell, Circulation; Julian Thieme; Kendall Willis; Don Armstrong; Bob Orr.

PALLADIUM STAFF HISTORY

The highlight of this year's Palladium are the clever division pages which were designed in clay and photographed. This work was done by Miss Doris Rebers' Art classes. Among the students who did exceptional work on this project were: Leo Hollis, Valora Wheeler, Catherine Biery, Joan Hein, Jane Ely, Joyce Robertson, and Betty Armstrong.

To Leslie G. Lee, advisor, goes the appreciation of the entire staff for without the help given by him the book would never have reached a state of completion.

Louise Alexander was the Editor of this year's Palladium and she was assisted by Helen Harper, Bill Schoultz and Jack McCrumb, who formed the Advertising Committee. John Angell and Cecil Nirider headed the circulation Committee and Don Armstrong, Jeanne Atchison, James Geraghty, and Kendall Willis did the snapshot pages.

To our advertisers and to the Powell Studio goes our thanks for the co-operation received.



LENNORDI



LAURA BOLTON
Treasurer (4), Camp-
fire Girls (1-2-3-4),
Dramatic Club (4),
Basketball Mgr. (2-3-
4), N-Club (4), Pal-
ladium Staff (4),
Debate Team (4), J-
Hop Committee, Junior
Play Committee



LOUISE ALEXANDER
Student Council (2),
Campfire Girls (1-2-3-
4), Choir (1-2-3-4),
Glee Club (1-2-4), Bas-
ketball (1-2-3-4), N-
Club (4), H.M.S. Pina-
fore, China Shop, In
Old Vienna, The "Mika-
do," Dramatic Club (4),
Orange & Black (2-3-4),
Palladium (3-4), Junior
Play



CHARLES ALTMAN
J-Hop Committee, Senior
Prom Committee, Dramat-
ic Club (3-4), Choir
(4), Football (4),
Senior Play, In Old Vi-
enna, The "Mikado"



RICHARD AMBLER
Choir (1-2), Basketball
(1-2-3), Football (3-4),
Band (1-2-3), Senior
Play, H.M.S. Pinafore,
China Shop, Dramatic
Club (4)



DON ARMSTRONG
J-Hop Committee, Treas-
urer (2), President (3),
Junior Play, Senior Play
Committee, Palladium
Staff (4)



ALFRED COUSINS
President (4), Vice
President (2), De-
bate (2-3), Senior
Play, Journalism
(4), Senior Prom



JOHN ANGELL
Vice President (4),
Treasurer (1), Stu-
dent Council (4),
Senior Prom Commit-
tee, Palladium
Staff (4)



JANE VanATTA
Secretary (4), H.M.S.
Pinafore, China
Shop, In Old Vienna,
The "Mikado," Choir
(4), Glee Club (3),
Senior Play, J-Hop
Committee, Dramatic
Club (4)

JEANNE ATCHISON
Basketball (2-3-4),
Glee Club (1-2-4),
Choir (1-2-3-4), H.M.S.
Pinafore, China Shop,
In Old Vienna, The "Mi-
kado," N-Club (4), Dra-
matic Club (4), Pal-
ladium Staff (4),
Senior Play



KEITH AVEY



HENRY BARTRUM



BETTY ANN BALDWIN
Choir (1-2-3), Glee
Club (1-2), Campfire
Girls





EDWARD BAUGHMAN
Football (3), Junior
Play

WARREN BOGART
Band (1-2-3-4), Junior
Play, Football (2-3-
4), Basketball (2-3-4),
Palladium Staff (4)



JAMES BEALL

HELEN BRAMER
Novi (1-2), Basketball
(3-4)



JUANDA BENDER

DALE BRAY
Football (3-4), Bas-
ketball (3), Junior
Play, Senior Play,
Track (4)



CATHERINE BIERY

ROSE BRUNANSKY
Basketball (2-3-4),
Junior Play, N-Club
(4), Dramatic Club (4)



MARY ETHEL BINGHAM

BETTY CARLSON
H.M.S. Pinafore, In
Old Vienna, The "Mika-
do," Senior Play Com-
mittee, Junior Play,
Choir (1-2-3-4), Glee
Club (1-2-4)



CHARLES BISHOP
Dramatic Club (4),
Senior Play, Basket-
ball (1), Capt. Basket-
ball '38, Baseball (1),
Football (4), Journal-
ism (4), 13-Club, N-
Club (1)

KENNETH CHAPPELL
Palladium Staff (4),
Orange & Black (4),
13-Club (Pres.), Bas-
ketball Mgr. (3-4)





CLARA CHRISTENSEN
Glee Club (1-2-4), Choir
(1-2-3-4), French Club
(3-4), H.M.S. Pinafore,
China Shop, In Old Vi-
enna, The "Mikado"



MARION COLEMAN
Junior Play, Basket-
ball (3), J-Hop Com-
mittee, Senior Play
Committee



BEN DUGUID
Football (3-4), Bas-
ketball (1-2-3-4), Golf
(2-3), Track (2), Stu-
dent Council (3), 13-
Club (4)



JAMES GERAGHTY
J-Hop Committee, Junior
Play



MARY GERAGHTY
Girl Scouts (1-2), Bas-
ketball (3), Junior
Play Committee, J-Hop
Committee, Senior Play
Committee, Senior Prom
Committee, French Club
(4), Orange & Black
(4), Senior Card Party
Committee



JOHN GIBSON
J-Hop Committee, Junior
Play Committee, Senior
Play

BETTY JANE GILLESPIE



MARY HESTER GOW
Girl Scouts (1), Com-
mercial Award (3),
Junior Play Committee,
Senior Prom Committee,
Senior Play Committee,
French Club



HELEN HARPER
Salutatorian, Choir
(1-2-3-4), Plymouth
(2nd. Sem of 1), Glee
Club (1-2-4), China
Shop, In Old Vienna,
The "Mikado," Senior
Play, Palladium Staff
(4), Dramatic Club
(4), Orange & Black,
Girl Scouts (1)



DOROTHY HEATON
Vice President (3),
Campfire Girls (1-2),
Choic (1-2-3-4), Glee
Club (1-2-4), H.M.S.
Pinafore, China Shop,
In Old Vienna, The
"Mikado," Dramatic
Club (4), Senior Play



GAIL HORNING
Cooley High School (1),
Choir (2-3-4), Glee
Club (2-4), The China
Shop, In Old Vienna,
The "Mikado," French
Club



GERALDINE JOHNSTON
Dramatic Club (4),
Choir (1-2-3-4), Bas-
ketball Mgr. (2-3),
H.M.S. Pinafore, In
Old Vienna, The "Mika-
do," Treasurer (3),
Student Council (4),
Senior Play, N-Club





LUCILE JORDAN

RICHARD LARKIN
Band (1-2-3-4), Choir
(4), Basketball (3-4),
Football (3-4), Gold
(2-3-4), The "Mikado,"
Senior Play, 13-Club
(4)



VIRGINIA KALUZYNY

RALPH LAWRENCE



HELEN KIMMEL
Basketball (2-3-4),
N-Club (4)

RUTH LEAVENWORTH



HELEN KREEGER

VIRGINIA LEONE



JEAN LAKE

MARJEAN LIDGARD
French Club, Verse
Speaking Choir



LUCILLE LAPHAM
Band (2-3-4), Choir
(1-2-3-4), Glee Club
(1-4), H.M.S. Pina-
fore, In Old Vienna,
The "Mikado," Senior
Play, Senior Fair
Booth--Chr., French
Club, Dramatic Club
(4), Campfire Girls
(1), Secretary (1)

FAITH LIEBETREU
Choir (1-2-3-4), Glee
Club (4), H.M.S. Pina-
fore, In Old Vienna,
The "Mikado," Senior
Play Committee, Senior
Prom Committee





ROWENA LIVERANCE

WANITTA MILLER
Choir (2-3-4), Glee
Club (2-4), China
Shop, In Old Vienna,
The "Mikado"



LAURA MARIE LORD
Valedictorian, Choir
(1-2-3), Glee Club (1-
2), Junior Play, French
Club, H.M.S. Pinafore,
China Shop, In Old Vi-
enna

JULIE MODOS
Palladium (3-4), Junior
Play Committee, Senior
Play Committee, J-Hop
Committee, Senior Prom
Committee, Senior Fair
Committee, Journalism
(2-3-4), Dramatic Club,
Orange & Black (2-3-4)



ELEANOR LYKE

CLAYTON MYERS
Basketball (3-4)



KATHYRN MARBURGER
Basketball (1-2-3-4),
N-Club (4), Dramatic
Club (4),

WALTER MYERS
Football (1-2-3-4),
Capt. Football (4),
Basketball (2-3-4)



KENNETH MARTENS

CECIL NIRIDER
Basketball (1-2-3-4),
Student Council (1),
Palladium Staff (4)



JACK McCRUMB
Basketball (1-2-3-4),
Mayor Student Council
(4), Secretary (3),
Palladium Staff (4),
13-Club (4)

RAYMOND PARMENTER
Basketball (3), Foot-
ball (4)





MAXINE PERKINS
Choir (1-2-3-4), Glee
Club (1-4), Girl Scouts
(1-2), Junior Play Com-
mittee, J-Hop Committee,
Senior Prom Committee,
Senior Play, H.M.S. Pin-
afore, In Old Vienna,
The "Mikado"



RUTH REED
Band (1-2-3-4), Choir
(1-2-3-4), Glee Club
(4), Senior Play, H.M.S.
Pinafore, In Old Vien-
na, The "Mikado"



ROBERT REMBOWSKI
Band (1-2-3-4), Choir
(1-2-3-4), Junior Play
Committee, H.M.S. Pin-
afore, China Shop, In
Old Vienna, The "Mika-
do"



MARJORIE ROWE



WILLIAM SCHOULTZ
Basketball (1-2-3),
President (2), Student
Council (3-4), Senior
Play, J-Hop Committee



PEARL SCHRODER

WANDA SINGLETON



HARRY SOMMERS



KATHLEEN SPRENGER
French Club (4), Vice
President, Library (3-
4)



JUANITA STANFORD
Secretary-Treasurer
French Club, Senior
Play, J-Hop Committee



E. K. STARKWEATHER



CATHERINE STEVENSON
Glee Club (4), Senior
Play





JANET STEWART
Basketball (1), Camp-
fire Girls (1-2), J-
Hop Committee, Senior
Play

MARGARET ZAYTI



MARY HELEN TESCH
Fair Committee, Verse
Speaking Choir, Senior
Play Committee, Senior
Card Party Committee

LUCILLE PRICE
Mackenzie High School,
Senior Play, Orange &
Black (2nd Sem. 4)



JULIAN THIEME
Debate Team, Speech
Contest, Orange &
Black (4), Palladium
Staff (4), Senior
Prom Committee, Senior
Play Committee

TOM MARTINO



LEE THOMPSON



HELEN VanSICKLE
Basketball (1-2-3-4),
Choir (2), N-Club (4),
Senior Play



HELEN WINTER
Choir (1-2-3-4), Band
(1-2-3-4), Glee Club
(4), Basketball (1),
H.M.S. Pinafore, In
Old Vienna, The "Mika-
do," Senior Play

SENIOR CLASS HISTORY

When we began our high school career as freshmen we elected the following officers from a class of ninety-seven members: Pat McLoughlin, President; Dick Ambler, Vice President; Lucille Lapham, Secretary; John Angell, Treasurer; and Cecil Nirider, alderman to the Student Council. Already we began to look forward to a distant goal, the annual Senior trip to Washington, and our first money-making ventures were in the form of bake sales, candy sales, and the collection of magazines and newspapers. At the end of this year we sponsored a trip to Put-In-Bay as the climax of our Freshman year.

After a pleasant vacation we once more mounted the steps of old N.H.S. as the sophomore class. That year we elected Bill Schoultz, President; Alfred Cousins, Vice President; Catherine Biery, Secretary; Don Armstrong, Treasurer; and Louise Alexander, alderman to the Student Council. During the year we sold magazines, sponsored two dances, held bake sales, and candy sales all of which swelled our treasury to the sum of \$61.96.

Our Junior year was perhaps the first outstanding year of high school for us. Our talented actors and actresses made their stage debut in the play Fifty-Fifty, directed by Mr. E. C. Mollema and Miss Estelle Griffiths.

For the annual J-Hop, held April 8, the gymnasium was gayly transformed into a spring festival with a large maypole in the center of the floor.

Another important event of this year was the choice of our class rings.

The class officers who so successfully led us through this year were: Don Armstrong, President; Dorothy Heaton, Vice President; Jack McCrumb, Secretary; Geraldine Johnston, Treasurer; and Benny Duguid, alderman to the Student Council.

Our Senior year was filled with activity. Our class officers were: Alfred Cousins, President; John Angell, Vice President; Jane Van Atta, Secretary; Laura Bolton, Treasurer; and Bill Schoultz, alderman to the Student Council.

The Senior Booth at the Fair proved to be our most successful money-making project bringing us a profit of \$261.03. We feel that we owe much of our success in this ordeal to Mrs. Ida B. Cooke, who helped us so faithfully and to her we are deeply indebted.

The next event of major importance was our Senior Prom with music by Red Goodman. The dance attracted a large crowd and yielded us a profit of \$62.48.

Our last effort of note was our Senior Play, Charm School, held March 30, and 31, which featured about thirty of our dramatically inclined members directed by Miss Estelle Griffiths.

On April 24, forty-two seniors, bag and baggage, chaperoned by Mrs. Mollema and our two sponsors, Miss Kathryn Giltner and Mr. Mollema, boarded the Washington-bound train at the Northville depot amid a great crowd of parents and well-wishers. Incidentally, we felt pretty important to think that the underclassmen just couldn't get along without us and that school was dismissed for the express purpose of seeing us off. This trip was a great event in the lives of most of us and we shall always treasure many happy memories of it.

Now eighty seniors are awaiting, perhaps some none too eagerly, for our graduation from dear Northville High School which will mean the close of our high school days forever.

Lucille Lapham

Julie Modos



JEAN LYKE



LUCILLE PRICE AND
NOT A BOY IN SIGHT



BIG BILL SCHULTZ



BETTY JANE GILLESPIE



BOGIE DEFIES
THE WORLD AT 5



MR. SMITH
PARKED BY A
FIRE PLUG TOO



MODEST WANITTA MILLER



CLARA CHRISTENSEN
WATCHING THE BIRDIE



JOHN GIBSON AND FAMILY



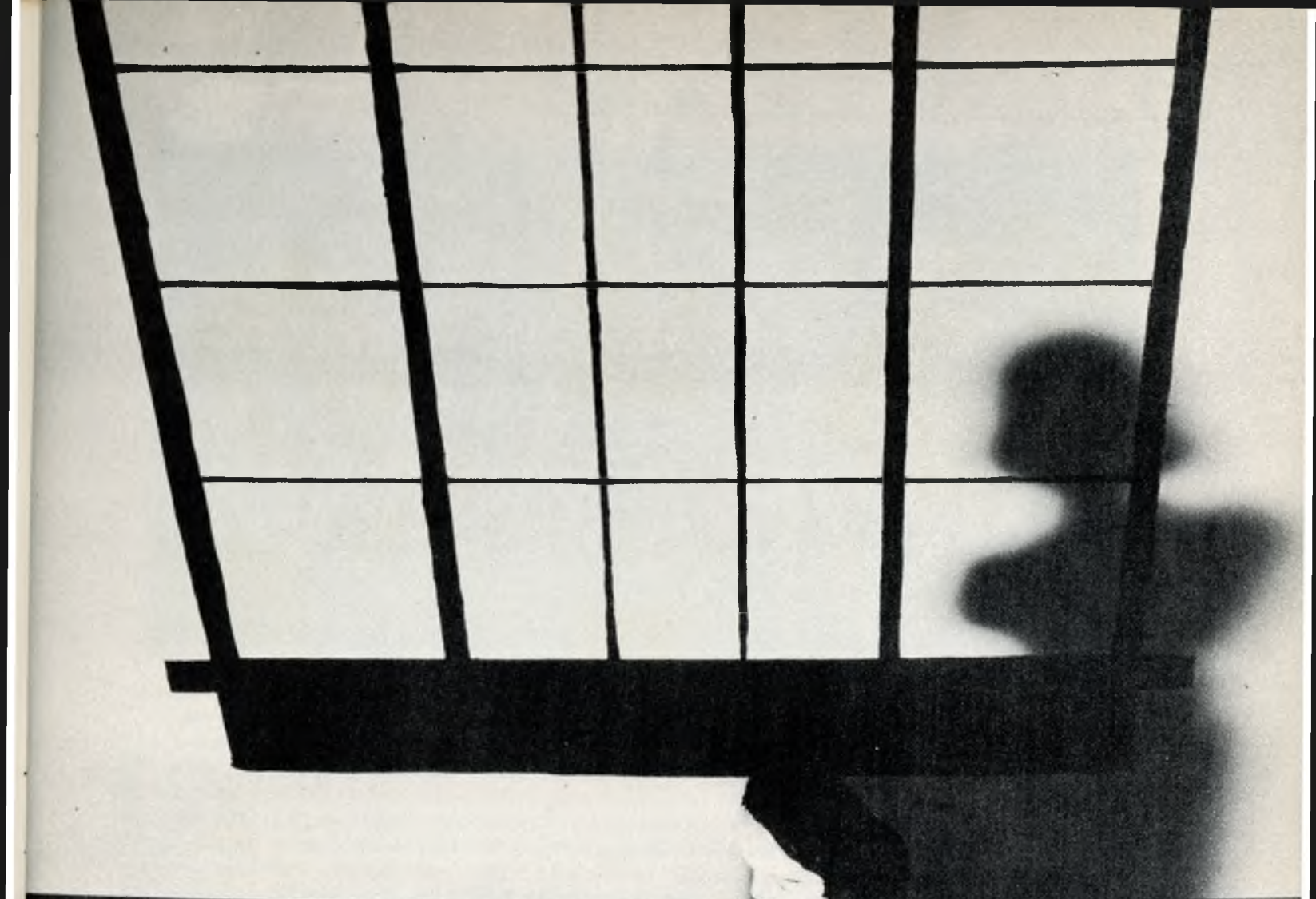
YVONNE TAYLOR



PROMINENT IN KINDERGARTEN
SOCIETY WERE KATE AND JERRIE



THE ROVER GIRLS
KEANNE AND MIN



CLASSES



First Row (Left to Right): Kenneth Wolfe; Junior Holt; Robert Parmenter; Don Green; Fred Sterner; Phillip Chase; Max Rowe; Leonard Fritz; Fred Robinson. Second Row (Left to Right): Elsie Wilder; Lucille Graham; Ernestine Lewis; Norma Gotro; Amelia Sutton; Nina Wenker; Mary Frances Batt; Betty Lanning; Helen Petroit; Mary Smith; Doris Diem; Rhea Walling; Marian Heatley; Alene Mathews; Dorothy Bingham; Eugenia Stanford. Third Row (Left to Right): Mary Potter; Natalie Whipple; Berwyn Thomas; Jean Orr; Marie Angove; Cornelia Sipos; Peggy McCullough; Kay Chatham; Elvira Trofast; Ruth Knight; Jean Lyke; Arlene Blake; Doris Hubbard; Barbara Simmons; Mary Jane Clark; Jean Marburger; Thelma Kent. Fourth Row (Left to Right): Wilford Wilson; Harry Porter; LeRoy VanAtta; Allan Gotro; Walter Grimm; James Dixon; Elmer Balko; Bob Orr; Charnelle Hardesty; Kendall Willis; Wm. H. Hensch, Sponsor.

JUNIOR CLASS HISTORY

1936 ushered this group into High School as freshman and they were guided through the school year by Robert Orr, President; Mary Potter, Vice President; Norma Gotro, Secretary; and Donald Green, Treasurer. Roger Miller was their alderman to the Student Council and Miss Florence Harper and Miss Gladys Ludwig sponsored the class.

During the sophomore year the class was headed by Robert Orr, President; Donald Green, Vice President; Jean Orr, Secretary, and Leonard Fritz, Treasurer; Arlene Blake acted as alderman to the Student Council. Miss Doris Reber and Miss Gladys Ludwig acted as sponsors.

"Little Miss Dreamer" was the play given by this class in their Junior year and it proved to be successful. Mrs. Frank Hawkins was the director and the play was presented February 2-3.

The annual J-Hop, one of the most important dances of the year, was given April 14. The Sophis-to-Cats played for approximately 170 couples and the Grand March was led by Class President Arlene Blake and Keith Van Amburg.

The class officers for the year were: Arlene Blake, President; Kenneth Wolfe, Vice President; Jean Orr, Secretary; James Dixon, Treasurer and Patricia Klein, alderman to the Student Council. The group was sponsored by Mrs. Ida B. Cooke and William H. Hensch.



TENTH GRADE

First Row (Left to Right): Raymond Beauchamp; John Costello; Sidney Junod; Donald Wilbur; Joe Defina; Walter Nefranowitz; James Funke; Chandler Parker; Louis Foreman; Jack Holcomb; Don Barnard; Don Kimmel. Second Row (Left to Right): Mrs. Frances Herrick, Sponsor; Betty Barry; Imogene Baughman; Marilyn Cavell; Ruth Frank; Madeline Passemore; Betty Hollis; Valora Wheeler; Mary Ellen Burgess; Betty Yerkes; Jeanne Smith; Jane Behen; Helen Dixon; Gertrude Cotton. Third Row (Left to Right): Loretta Nagel; Betty Cousins; Jean Hein; Thelma George; Barbara Spicer; Ruth Parmenter; Joyce Moreley; Edith Hess; Betty Stillwell; Virginia Ault; Elaine Sommers; Jane Ely; Virginia Kern; Ida Marie Walker; Marjorie Penberthy; Mary Ann Murray; Engla Peterson; Barbara Curtis; Addie Mae Bartrum; E. V. Ellison, Sponsor. Fourth Row (Left to Right): Wallace Whipple; Bill Rose; Harold Martens; Douglas McCluskie; Frank Eaton; Eugene Reeves; Lyman Larson; William Long; Sprague Lester; William Widmaier; Norman Daggett; Fred Walker; Louis Eaton; Robert Ross; Joe Spagnuolo; Crosby Bartlett Washburne, Jr.; Charles McArthur; Ronald Anderson; Edward Erwin; Orville Lyke.

SOPHOMORE CLASS HISTORY

Frank Eaton, President; Louis Eaton, Vice President; Marilyn Cavell, Secretary; Helen Dixon, Treasurer; and Ida Marie Walker, alderman to the Student Council were the officers who headed this class through its first strenuous year in high school. Mr. H. B. Smith and Mr. E. V. Ellison were the sponsors.

Louis Eaton, President; Joe Defino, Vice President; Betty Stillwell, Secretary; and Ruth Parmenter, Treasurer were the officers elected to guide the class this year and Ida Walker was again alderman to the Student Council. This year's sponsors were Mrs. Frances Herrick and Mr. E. V. Ellison.

The year was started off by a bake sale and following that the class played host to the freshman class at a party in the high school gymnasium. Mrs. Herrick, Mr. Ellison and Dr. and Mrs. L. W. Snow were sponsors for this affair.

A Sophomore Valentine Dance was planned for February 10. It was very cleverly decorated and proved successful both socially and financially.



NINTH GRADE

First Row (Left to Right): Richard Simmons; Arthur Karschnick; Robert Beasley; Max Coe; Sidney Laney; Leo Hollis; Alvin Sheppard; Cartter Church; Don Barnard; Harold Schoultz; Harold Hubbard; Robert McCluskie; Louis Herrick; Eugene Hogan; Robert Vogtlin; John Geraghty; Robert Lindsay; Ralph Hay. Second Row (Left to Right): Dorothy Beall; Beatrice Reed; Donna Miller; Elizabeth Mercer; Pat Lord; Laura Jean Litsenberger; Lelia Rossow; Janice Covell; Myra Gibson; Madeline Perkins; Mary Hollis; Myrna Hubbard; Maxine Lemmon; Julia Politz; Joan Vroman; Marjorie Parmenter; Joyce Robertson; Yvonne Taylor; Dawn Sutton; Blanch Miller; Florence Bongiovanni; Marcella Funke. Third Row (Left to Right): Merle Wheeler, Sponsor; Theresa Spagnuolo; Irene Martino; Jeanette Clark; Hilda Westphall; Betty Streng; Emma Williams; Gladys Clark; Shirley Mussolf; Edythe Amerman; Dorothy VanValkenburgh; Betty Alger; Maxine Coe; Florence Rentschler; Dorothy Congo; Carrel Carlson; Florence Gotro; Evelyn Wenker; Thelma Grover; Pat Alexander; Lucille Stahl; Christobel Steinhoff; Margaret Morse; Ruth Gagnon; Phyllis Hancock; Jean Lute. Fourth Row (Left to Right): Lawrence Rogart; Frank Bongiovanni; George Hunter; John Ward; Bob Hunter; Robert Sears; George Shoebridge; George White; Myron Utley; Ray Hartner; James Reed; Tom Widmaier; Raymond Renazewski; Richard Parmalee; Dick Davis; Earl Sessions; Richard Ward; John Norton; Robert Stremich; James LaRue; Ransom Baldwin; Louie Babbitt; Don Kreeger.

FRESHMAN CLASS HISTORY

The ninth grade chose the following officers to represent them during their first year in high school: Harold Schoultz, President; Laura Jean Litsenberger, Vice President; Robert Stremich, Treasurer; and Dawn Sutton, Secretary.

Mr. Merle Wheeler is the lone sponsor of this class and Murna Hubbard is alderman to the student council.

The only activity enjoyed by this class was a party given for them by the Sophomore Class.



EIGHTH GRADE

First Row (Left to Right): Robert Hosback; Walter Sterner; Donald Kelner; Billy Johnston; Edwin King; Billy Tesch; Norman Hickok; Bud Murray; Robert Parmenter. Second Row (Left to Right): Mrs. I. B. Cooke, Sponsor; Lois Lloyd; Betty Jane Wagonschutz; Nancy Defino; Eleanor Karschonick; Jean McCollough; Joan McCollough; Mary Smith; Lois Church; Marjorie Edmonson; Shirley Sutton; Shirley Price. Third Row (Left to Right): Betty Saley; Marie Labron; Eloise Earhart; Irene Toma; Marilyn Gunsell; Beatrice Jackson; Geraldine Winkler; Esther Rossow; Lillian Shoebridge; Betty Nagel; Lois Sutton; Betty Brown; Shirley MacKean; Dorothy Small; Lena Light; Phyllis Knight; John Horning. Fourth Row (Left to Right): Donna Dickerson; Frank Hunter; Henry Lester; William Light; Douglass Bolton; John Beauchamp; Donald Butler; Wallace Reid; Dean Honsinger; June Wilder.



SEVENTH GRADE

First Row (Left to Right): Steve Folino; Bruce Simmons; Robert Streng; Jim Ritchie; Jack Taggart; Gordon Harris; Howard Card; Kenneth Bartrum; Gerald Miller; Alfred Heatley, Jr.; Alex Funke. Second Row (Left to Right): Doris Beauchamp; Marjorie Garden; Catherine Rossow; Patsy Craig; Marilyn Beall; Marjorie Gibson; Lorraine Lapham; Dora Tibbetts; Rita Daggett; Anna Jean Flaherty; Marjorie Sessions. Third Row (Left to Right): Joan DeVault; Madeline Graham; Dolores Will; Edith Blake; Aletha Johnson; Patsy McClintock; Mary Louise Behen; Gladys Bedore; Harriet Carlson; Beverly Morse; Loretta Widmaier; Rowena Nalley; Maxine Wick; Virginia Hilliker; Ida B. Cooke, Sponsor. Fourth Row (Left to Right): Louis Girardin; Archie Niles; Robert Kraft; Milo Bliss; Harold Tuck; Charles Dayton; John Zedemont; Richard Popham; Russell Penberthy; John Maloney; Donald Stevens; Homer Hodge.



STELLA ON TWO OF HER HISTORY MAKING TRIPS



MR LEE
AFTER A DAYS HUNTING



ISN'T COTTAGE LIFE GRAND ?



HELEN
GETTING HER EXERSISE



THE
19

PROM
38



ACTIVITIES



First Row (Left to Right): Chandler Parker; Bob Ross; Robert Rembowski; Harold Martens; Harold Schoultz; Douglas McCluskie; George Hunter; Eugene Hogan; Allan Gotro; Louis Eaton; E. K. Starkweather. Second Row (Left to Right): Dorothy Heaton; Faith Liebetreu; Helen Harper; Louise Alexander; Jeanne Atchison; Betty Carlson; Wanitta Miller; Geraldine Johnston; Lucille Lapham; Helen Winters; Ruth Reed; Maxine Perkins; Gail Horning; Clara Christensen; Jane VanAtta. Third Row (Left to Right): Leslie G. Lee, Director; Yvonne Taylor, Joyce McNeal; Barbara Curtis; Ruth Frank; Blanche Miller; Ernestine Lewis; Julia Politz; Imogene Baughman; Elaine Sommers; Norma Gotro; Laura Jean Litsenberger; Marie Angove; Marian Heatley; Betty Cousins; Lela Rossow; Jane Behen; Betty Jane Yerkes; Mary Ellen Burgess; Mary Smith; Evelyn Wenkler; Thelma Grover. Fourth Row (Left to Right): Richard Simmons; Sprague Lester; LeRoy VanAtta; Jean Lyke; Doris Hubbard; Myrna Hubbard; Lucille Graham; Peggy McCullough; Virginia Ault; Edythe Amerman; Carrel Carlson; Ida Marie Walker; Loretta Nagel; Edith Hess; Marilyn Cavell; Charles Altman; Dick Larkins.

CHOIR HISTORY

The high school choir, numbering seventy voices, has had a busy year. A program appropriate to the season was given at Christmas time. The choir also participated in an exchange program with the Romulus Schools.

The "Mikado" by Gilbert and Sullivan, which was presented June 1 and 2, was the major undertaking of this group the second semester.



SENIOR GIRLS' GLEE CLUB

First Row (Left to Right): Wanitta Miller; Helen Winters; Maxine Perkins; Clara Christensen; Catherine Stevenson; Lucille Lapham; Faith Liebetreu; Betty Carlson; Ruth Reed; Gail Horning. Second Row (Left to Right): Betty Mercer; Marie Angove; Yvonne Taylor; Thelma Grover; Evelyn Wenker; Helen Harper; Louise Alexander; Jeanne Atchison; Jane VanAtta; Dorothy Heaton; Peggy McCullough; Joyce McNeal; Loretta Nagel; Betty Nagel; Jane Behen. Third Row (Left to Right): Ruth Frank; Mary Ellen Burgess; Valora Wheeler; Betty Yerkes; Marilyn Cavell; Leslie G. Lee, Director; Virginia Ault; Jeanne Smith; Blanche Miller; Marian Heatley; Ernestine Lewis.



BAND

First Row (Left to Right): Florence Gotro; Nancy Defino; Ruth Reed; Lorraine Lapham; Mary Louise Behen; Shirley MacLean; Helen Winters; John Horning; Bud Murray; Jane Lanning; Delphine Nalley; Norma Gotro. Second Row (Left to Right): Jack Taggart; Russell Penberthy; Bill Johnston; Robert McCluskie; Richard Larkin; Warren Bogart; Ruth Parmenter; Mary Ann Murray; Marian Heatley; Helen Dixon; Geraldine Winkler; Rowena Nalley; Marilyn Gunsell; Lucille Lapham. Third Row (Left to Right): Leslie G. Lee, Director; Phillip Chase; Allan Gotro; Douglas McCluskie; Sprague Lester; Robert Rembowski; Louis Eaton; Robert Ross; Harold Martens; Louie Babbitt; Robert Vogtlin; R. H. Amerman, Manager.



JUNIOR GIRLS' GLEE CLUB

First Row (Left to Right): Patsy McClintock; Harriet Carlson; Marjorie Gibson; Lorraine Lapham; Mary Louise Behen; Gladys Bedore; Lois Church; Catherine Rossow; Marilyn Beall; Doris Beauchamp; Joan DeVault. Second Row (Left to Right): Donna Dickerson; Lena Light; Lois Lloyd; Esther Rossow; Joan McCullough; Shirley Maclean; Rita Daggett; Marjorie Garden; Marjorie Sessions; Nancy Defina; Jean McCullough; Betty Nagel; Shirley Nutton; June Wilder; Rowena Nalley; Third Row (Left to Right): Virginia Hilliker; Shirley Price; Mary Smith; Lillian Shoebridge; Loretta Widmaier; Madeline Graham; Eloise Earhart; Beverly Morse; Marjorie Edmondson; Betty Jane Wagenschutz; Anna Jean Flaherty; Dolores Will; Edith Blake; Aletha Johnson; Eleanor Karschnick; Dora Tibbetts; Phyllis Knight. Fourth Row (Left to Right): Leslie G. Lee, Director; Peggy McCullough, Accompanist; Betty Brown; Dorothy Small; Betty Saley; Marion Labron; Irene Toma; Geraldine Winkler; Lois Sutton; Maxine Wick; Beatrice Jackson.



JUNIOR BOYS' GLEE CLUB

First Row (Left to Right): Gerald Miller; Donald Kelner; Norman Hickok; Bud Murray; Alex Funke; Kenneth Bartrum. Second Row (Left to Right): John Horning; Donald Stevens; Billy Johnston; Edwin King; Jim Ritchie; Jack Taggart; Walter Sterner; Kay Stephens; Bill Tesch; Donald Butler; Leslie G. Lee, Director. Third Row (Left to Right): Russell Penberthy; Robert Hosbach; Wallace Reid; Robert Kraft; Dean Honsinger.



ORANGE AND BLACK STAFF

First Row (Left to Right): Lucille Price; Louise Alexander, Editor; Mrs. Frank L. Hawkins, Advisor; Mary Potter; Julie Modos; Gertrude Catton. Second Row (Left to Right): Julian Thieme; Kenneth Chappell; Eugenia Stanford; Betty Armstrong; Mary Geraghty; Alfred Cousins; Charles Bishop.



DEBATE TEAM

First Row (Left to Right): Joyce Moreley; Laura Bolton; Betty Gillespie. Second Row (Left to Right): John Costello; E. C. Mollema, Coach; Julian Thieme.



SENIOR PLAY CAST

First Row (Seated Left to Right): Catherine Stevenson; Ruth Leavenworth; Jeanne Atchison; Helen VanSickle; Helen Winters; Alfred Cousins; Dorothy Heaton; Maxine Perkins; Richard Ambler. Second Row (Left to Right): Jane VanAtta; Janet Stewart; Lucille Lapham; E. K. Starkweather; Juanita Stanford; Charles Bishop; Geraldine Johnston; Dale Bray; Helen Harper; Bill Schoultz; Richard Larkins; Kathleen Sprenger; John Gibson; Charles Altman, Ruth Reed; Estelle Griffiths, Director.



JUNIOR PLAY CAST

First Row (Left to Right): Cornelia Sipos; Eugenia Stanford; Amelia Sutton; Mrs. Frank Hawkins, Director; Jean Marburger; Natalie Whipple; Elvira Trofast. Second Row (Left to Right): Max Rowe; Kendall Willis; Allan Gotro; LeRoy VanAtta; Rhea Walling; Elsie Wilder; Jean Orr; Charnelle Hardesty; Elmer Balko; Kenneth Wolfe; Wilford Wilson.



GIRLS' N-CLUB

First Row (Left to Right): Rose Brunansky; Helen Bramer; Jeanne Atchison; Kathryn Marburger; Helen Kimmel; Geraldine Johnston; Louise Alexander. Second Row (Left to Right): Helen Van-Sickle; Maxine Coe; Yvonne Taylor; Pat Klein; Ida Marie Walker; Ruth Parmenter; Betty Strong; Virginia Kern; Laura Bolton; Mary Ellen Burgess. Third Row (Left to Right): Gladys Ludwig, Coach; Alene Mathews; Carrel Carlson; Mary Frances Batt; Marilyn Cavell; Jane Ely.



"13" CLUB

First Row (Left to Right): Jack McCrumb; William Schoultz; William H. Hensch, Sponsor; Kenneth Chappell; Richard Larkins; Charles Bishop. Second Row (Left to Right): Fred Whipple; Cecil Nirider; Warren Bogart; Dale Bray; Ben Duguid; Clayton Myers; Walter Myers.



JUNIOR STUDENT COUNCIL

First Row (Left to Right): Lois Church; Mrs. Ida B. Cooke, Advisor; Frank Hunter; Mary Lou Behen; Edith Blake. Second Row (Left to Right): Bud Murray; Kay Stephens; Henry Lester; Donald Kelner.



FRENCH CLUB

First Row (Left to Right): Clara Christensen; Virginia Kern; Kathleen Sprenger; Lucille Lapham; Juanita Stanford; Joyce Moreley. Second Row (Left to Right): Gail Horning; Virginis Kaluzny; Mary Geraghty; Elvira Trofast; Mary Frances Batt; Mary Potter; Eugenia Stanford; Ruth Knight; Laura Marie Lord; Ione B. Palmer, Sponsor. Third Row (Left to Right): Ernestine Lewis; Mary Hester Gow; Helen Petroit; Natalie Whipple; Peggy McCullough; Marjean Lidgard; Marjorie Parmenter.



SPORTS



First Row (Left to Right): Myrna Hubbard; Ida Marie Walker; G. V. Harrison, Advisor; Geraldine Johnston; Patricia Klein. Second Row (Left to Right): William Schoultz; Jack McCrumb, Mayor; John Angell; Bob Orr; Bud Murray.

STUDENT COUNCIL HISTORY

This year's Student Council was headed by Mayor Jack McCrumb and consisted of Geraldine Johnston, Secretary; John Angell, Treasurer; and Bob Orr, Chief of Police. Aldermen were: Senior Class, Bill Schoultz; Junior Class, Pat Klein; Sophomore Class, Ida Walker and Freshman Class, Murna Hubbard. Representative for the Junior High was Bud Murray.

This council, which was the first one in years to finish with money ahead, used the following projects to make money: gate receipts from all sports, dances, shows, and the selling of various articles.

Expenses for the year included the financing of all sports, the purchase of a microphone, and the purchase of lights for the trophy case.



First Row (Left to Right): Charles Altman; James LaRue; Robert Beasley; Cartter Church. Second Row (Left to Right): Bill Widmaier, Manager; Frank Bongiovanni; Sidney Junod; James Beall; Kendall Willis; Walter Myers; Joe Defina; Kenneth Martens; Max Rowe; James Dixon, Manager. Third Row (Left to Right): Harry B. Smith, Coach; James Funke; Clayton Myers; Harold Fritz; George Houghton; Ben Duguid; Warren Bogart; Sprague Lester; Robert Ross, Raymond Parmenter; Richard Ambler. Fourth Row (Left to Right): Harold Hubbard; John Norton; George White; Ray Hartner; Eugene Reeves; Dale Bray; Richard Larkins; Walter Nefranowitz; Chandler Parker; Robert Stremich.

FOOTBALL

			We	They
September 23	Walled Lake	there	6	0
September 30	Open			
October 7	Melvindale	here	0	32
October 14	Open			
October 21	Berkley	there	0	27
October 28	Redford Union	there	13	13
November 4	Trenton	here	0	33
November 11	Van Dyke	there	6	13
November 18	Plymouth	here	0	27

Seniors who saw their last games in high school were: Captain Walter Myers, Charles Altman, Clayton Myers, Ben Duguid, Warren Bogart, Raymond Parmenter, Richard Ambler, Dale Bray, and Richard Larkin.



First Row (Left to Right): Ken Chappell, Manager; Ray Hartner; Clayton Myers; Warren Bogart; Ben Duguid, Captain; Walter Myers; George Houghton, Harry B. Smith, Coach. Second Row (Left to Right): Charles Bishop, Assistant Coach; Frank Bongiovanni; James Funke; Jack Holcomb; Dick Larkins; Harold Fritz; Harold Schoultz; Junior Holt. Third Row (Left to Right): Lawrence McArthur; Louis Eaton; William Widmaier; Robert Orr; Robert Stremich.

BOYS' BASKETBALL HISTORY

First Team Schedule		We	They
December 1	Ferndale	29	27
December 9	Berkley	16	18
December 16	Plymouth	23	24
December 20	Redford Union	42	14
January 6	Trenton	26	21
January 13	Melvindale	15	34
January 17	Plymouth	18	24
January 21	Van Dyke	46	26
January 27	Berkley	22	29
January 31	Walled Lake	40	27
February 3	Redford Union	33	24
February 10	Trenton	35	29
February 17	Melvindale	30	39
February 24	Van Dyke	48	0

Second Team Schedule		We	They
December 1	Ferndale	22	24
December 9	Berkley	12	17
December 16	Plymouth	15	21
December 20	Redford Union	41	16
January 6	Trenton	12	10
January 13	Melvindale	25	23
January 17	Plymouth	25	29
January 20	Van Dyke	25	23
January 26	Berkley	22	10
January 31	Walled Lake	18	10
February 3	Redford Union	31	19
February 10	Trenton	19	18
February 17	Melvindale	24	33
February 24	Van Dyke	23	16



First Row (Left to Right): Kathryn Marburger; Marilyn Cavell; Jeanne Atchison; Rose Brunansky; Louise Alexander; Mary Frances Batt; Helen VanSickle; Helen Kimmel; Helen Bramer. Second Row (Left to Right): Mary Burgess; Jane Ely; Phyllis Jones; Ruth Parmenter; Yvonne Taylor; Betty Strong; Maxine Coe; Alene Mathews. Third Row (Left to Right): Ida Marie Walker; Pat Klein, Manager; Coach, Gladys Ludwig, Laura Bolton, Manager; Carol Carlson.

GIRLS' BASKETBALL HISTORY

This year the Girl's won the League Championship for the second consecutive year.

	First Team Schedule	We	They
December 20	Hazel Park	38	27
January 12	Melvindale	13	4
January 17	Romulus	25	11
January 20	Weberville	35	23
January 24	Berkley	29	8
February 2	Redford Union	21	6
February 9	Melvindale	22	26
February 16	Berkley	25	12
February 28	Redford Union	22	21
March 3	Hazel Park	35	25

First team hi-point scorer--Mary Frances Batt, Junior
 Second team hi-point scorer--Ruth Parmenter

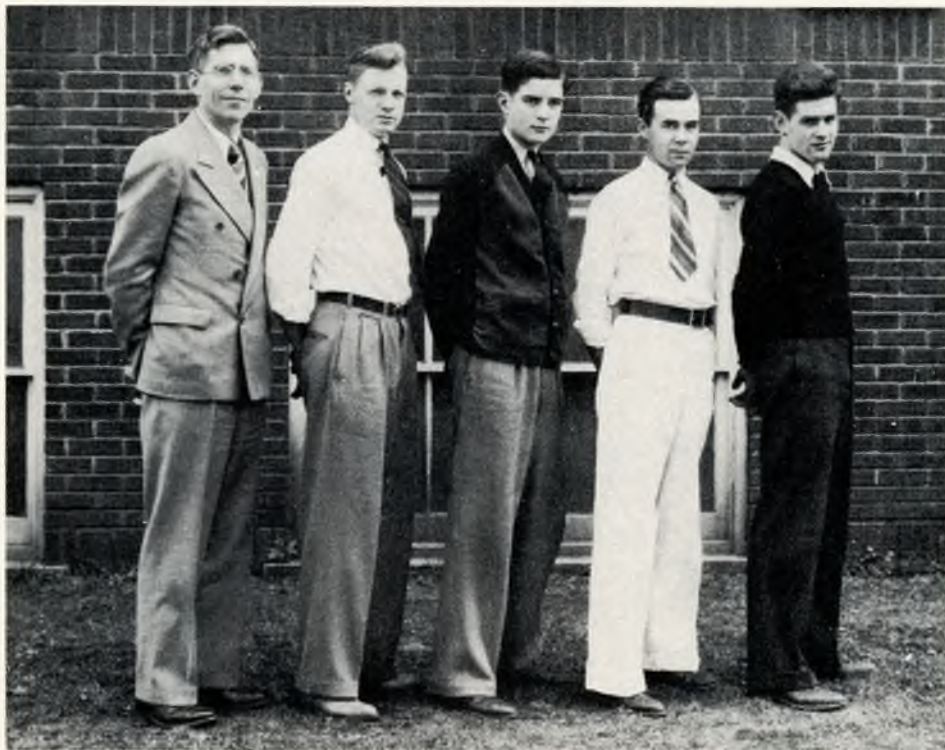
First Team Lineup

Kathryn Marburger	Mary Burgess
Marilyn Cavell	Jane Ely
Jeanne Atchison	Phyllis Jones
Rose Brunansky	Ruth Parmenter
Louise Alexander	Yvonne Taylor
Mary Frances Batt	Betty Strong
Helen Van Sickle	Maxine Coe
Helen Kimmel	Alene Mathews
Helen Bramer	Ida Marie Walker



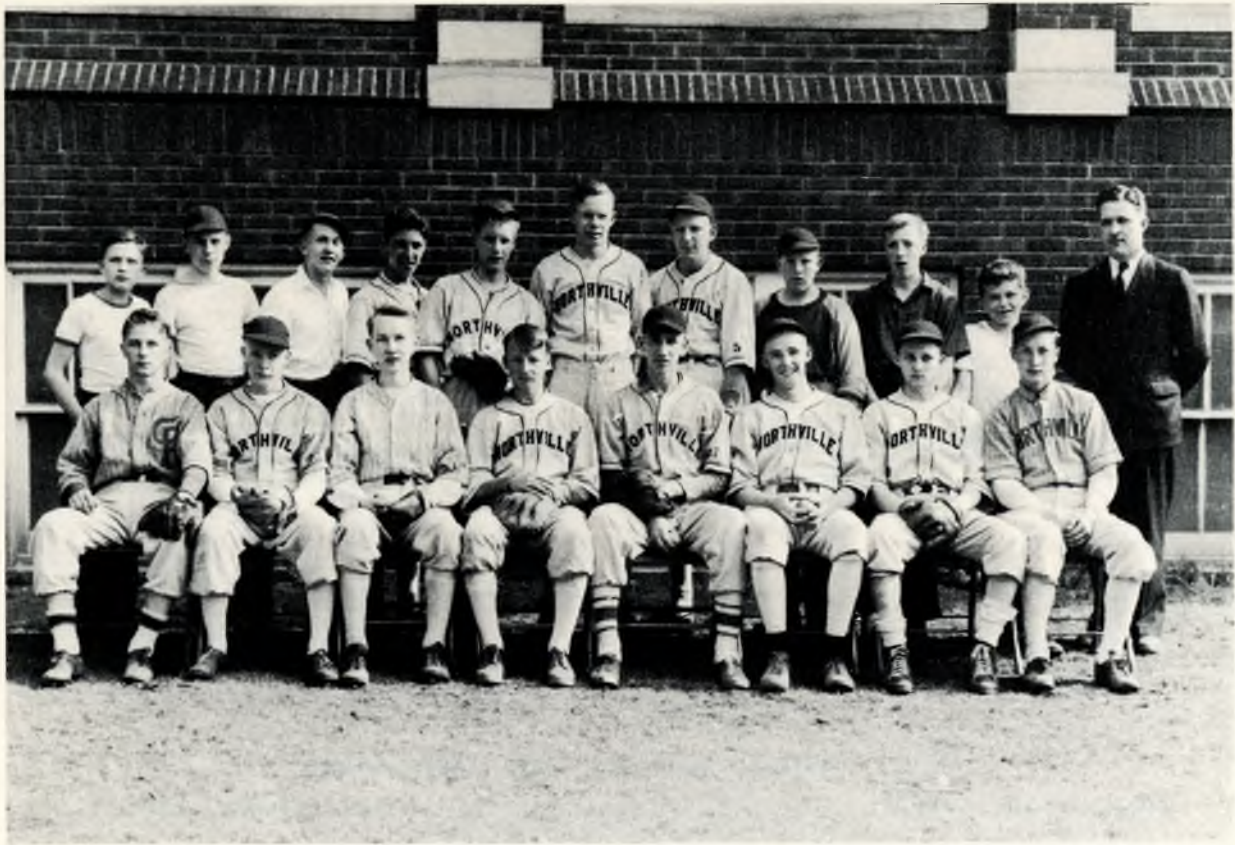
TRACK TEAM

First Row (Left to Right): Kendall Willis; John Costello; Lyman Larson; Ransom Baldwin; Max Coe.
 Second Row (Left to Right): James Dixon; Eugene Reeves; Dale Bray; Bob Orr; Fred Sterner; William H. Hensch, Coach.



GOLF TEAM

Left to Right: G. V. Harrison, Coach; Richard Larkins; Bill Washburne; Robert Rembowski; Walter Myers.



First Row (Left to Right): Kenneth Wolfe; Fred Robinson; Louis Eaton; Jim LaRue; Ray Hartner; Bob Orr; James Funke; Lawrence McArthur. Second Row (Left to Right): Don Kreeger, Manager; Carter Church; Don Barnard; Frank Bongiovanni; John Norton; Jim Beall; Don Kimmel; Robert Beasley; Fred Sterner; Alex Funke, Manager; Harry Smith, Coach.

BASEBALL

Schedule			We	They
April 28	Plymouth	there	4	9
May 2	Berkley	there	2	5
May 4	Trenton	here	2	1
May 9	Melvindale	here	5	3
May 11	Redford Union	there	5	4
May 16	Van Dyke	here	3	2
May 18	Berkley	here	3	6
May 23	Trenton	there	8	2
May 25	Melvindale	there		
May 29	Redford Union	here		
June 1	Van Dyke	there		
June 6	Plymouth	here		

NORTHVILLE SCHOOLS

ACCREDITED BY UNIVERSITY OF MICHIGAN

BOARD OF EDUCATION

PRES. G.W. STALKER
SEC. S.W. AMBLER
TREAS. F.W. LYKE

TRUSTEES:
DR. L.W. SNOW
DR. E. B. CAVELL

VISITORS WELCOME

ENROLLMENT 825

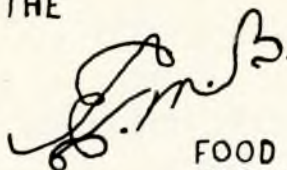
WELL TRAINED AND	EXPERIENCED FACULTY
ADEQUATE AND MODERN HIGH SCHOOL	NEW 13 ROOM GRADE SCHOOL BUILDING
WELL EQUIPPED SHOP	HOME ECONOMICS
CHEMICAL AND PHYSICAL LABORATORIES	BAND
GYMNASIUM	WINNING ATHLETIC TEAMS
A CAPPELLA CHOIR	JOURNALISM

NON RESIDENT TUITION
HIGH SCHOOL \$90 PER YEAR
GRADE SCHOOL \$65 PER YEAR

FOR FURTHER INFORMATION WRITE OR PHONE

SUPT. RUSSELL H. AMERMAN
WEST MAIN ST. NORTHVILLE, MICH PHONE 111

THE



FOOD
MARKET

CHOICE GROCERIES
QUALITY MEAT

FRESH FRUITS
VEGETABLES

LOCAL FOLKS
LOCAL CAPITAL
"NOT IN THE CHAIN GANG"

EMB.-A GRADUATE OF OLD N.H.S.-WAY BACK IN-1911

108 E.MAIN ST. NORTHVILLE

COMPLIMENTS
OF

A.A.Ho'.COMB M.D.

COMPLIMENTS
OF

R.M. ATCHISON M.D.

LUMBER & BUILDING MATERIALS

DUPONT PAINTS

WAYNE FEEDS

"quality first - service always"

NORTHVILLE MILLING & LUMBER
CO.

PHONE 108

BASE LINE RD. AT P.M. TRACKS

COMPLIMENTS
OF

DR. L. W. SNOW

THE
NORTHVILLE
CONFECTIONERY SHOP

SODAS
CANDY
SUNDAES

PHONE 125 III E. MAIN

JAMES SPAGNUOLO

*Congratulations to
the Senior Class*

MORSE'S DAIRY

436 N. CENTER

PHONE 492



OUCH!



MAGGIE



BOATING



PHYL JONES



MUSH MOUTH



THOSE JUNIORS



FRESH



CAMP FIRE GIRLS



WILD BILL HENSCH
DRUGSTORE COWBOY



RED



SOUR PUSSES



CHUG-CHUG

NORTHVILLE DRUG
CO.

L.C. STEWART

PHONE 238

134 E. MAIN ST.

COMPLIMENTS
OF

NORTHVILLE
WAYNE COUNTY FAIR

AUG. 16-17-18-19
1939

DEPOSITORS
STATE BANK
NORTHVILLE

Congratulations
and
Best Wishes
to the
Seniors

MEMBER OF F.D.I.C.

COMPLIMENTS
OF

CARL ELY & SONS
COAL & ICE

PHONE 191-68-76-425

HI-SPEED STATION
COR. MAIN & WING

GAS
OIL

"Alamite done right"

M.C. HINMAN MGR.
STARR HERRICK
SIDNEY JUNOD

COMPLIMENTS
OF

DR. J.K. EASTLAND

COMPLIMENTS
OF

N.C. SCHRADER

COMPLIMENTS
OF

NEIL D. HANNAFORD
NORTHVILLE HARDWARE

COR. MAIN & CENTER

115-J

NORTHVILLE

COMPLIMENTS
OF
NORTHVILLE LABORATORIES
INC.

NORTHVILLE
CREAMERY

GOLDEN GLOW PRODUCTS
MILK
CREAM
ORANGE
CHOCOLATE

PHONE 119J DON R. MILLER

RAY J. CASTERLINE
FUNERAL HOME

PERSONAL EMBALMER AND
FUNERAL DIRECTOR
AMBULANCE SERVICE
MODERN EQUIPMENT

PHONE 265

COMPLIMENTS
OF
JONES FLORAL
CO.

PHONE 453

117 DUBUAR ST.

COMPLIMENTS
OF
NORTHVILLE LABORATORIES
INC.

NORTHVILLE
CREAMERY
GOLDEN GLOW PRODUCTS
MILK
CREAM
ORANGE
CHOCOLATE
PHONE 119J DON R. MILLER

RAY J. CASTERLINE
FUNERAL HOME
PERSONAL EMBALMER AND
FUNERAL DIRECTOR
AMBULANCE SERVICE
MODERN EQUIPMENT
PHONE 265

COMPLIMENTS
OF
JONES FLORAL
CO.
PHONE 453
117 DUBUAR ST.

COMPLIMENTS
OF

J.E. SELIADY M.D.

WOOLEN GOODS
STORE

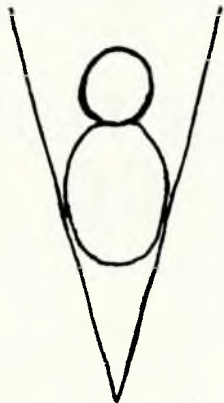
135 MAIN STREET

LADIES WEAR
FOR
SPORT & DRESS

ALL WOOL BLANKETS
CABIN CRAFT SPREADS
IMPORTED & DOMESTIC LINENS
LADIES HOSIERY & LINGERIE

TOM EDMONDSON
INC.

SALES



SERVICE

24 HR. TOWING SERVICE
TELEPHONE 54-J 54-R
117-119 W. MAIN NORTHVILLE

COMPLIMENTS
OF

D.R.L. KERR

COMPLIMENTS
OF
ROY M. VAN ATTA
 AUTOMOBILE DEALER
 NORTHVILLE MICHIGAN

COMPLIMENTS
OF
ELMER L. SMITH
 REAL ESTATE & INSURANCE
 PHONE 470 NORTHVILLE

COMPLIMENTS
OF
JENNIE COUSINS
 LADIES READY TO WEAR
 109 N. CENTER PHONE 19

COMPLIMENTS
OF
DR. D. A. BRIEF

LUMBER & COAL
 BUILDER'S SUPPLIES
 SHINGLES PAINT
 TELEPHONE — NORTHVILLE 30
INOWELS LUMBER & COAL
 CO.

COMPLIMENTS
OF
ALEXANDER'S GREENHOUSE
 FLOWERS FOR ALL OCCASIONS

MRS. ORA DEAL
HAIR SHOP
 PHONE 244 210 S. CENTER ST.

<p>COMPLIMENTS OF D & C STORES INC. 5¢ TO 21¢</p>	<p>THE LOUIS STORE DRY GOODS & SHOES 120 E. MAIN ST.</p>
<p>W. E. FORNEY DEALERS IN COAL & ICE ANCHOR KOLSTOKER 116 E. MAIN PHONE 353-J</p>	<p>COMPLIMENTS OF WILSON'S WHITE KITCHEN</p>
<p>COMPLIMENTS OF NORTHVILLE ELECTRIC SHOP C. B. TURNBULL 153 E. MAIN PHONE 184-J</p>	<p>LUCIUS BLAKE JEWELRY Co. "Where you can buy longer lasting gifts for the amount of money you wish to spend."</p>
<p>C. F. SMITH CO. GROCERIES & COLD MEATS PHONE 9197 115 E. MAIN</p>	<p>COMPLIMENTS OF NORTHVILLE SHOE REPAIR JOE. REVITZER PROP.</p>

<p>HOLMES GIFT SHOP HEADQUARTERS FOR GREETING CARDS GIFTS</p> <p>110 N. CENTER NORTHVILLE</p>	<p>COMPLIMENTS OF M.J. BOELENS UPHOLSTERER</p>
<p>COMPLIMENTS OF BAILEY STANDARD SERVICE MAIN & CHURCH</p>	<p>NELLIES BEAUTY SHOPPE NELLIE TIBBLE PROP. 521 W. MAIN ST. PHONE 344</p>
<p>THE KROGER GROCERY AND BAKING COMPANY THE COMPLETE FOOD MARKET NORTHVILLE</p>	<p>HILL'S MEAT MARKET FRESH & SMOKED MEATS OYSTERS IN SEASON PHONE 43 114 W. MAIN</p>
<p>COMPLIMENTS OF RATHBURN CHEVROLET SALES</p>	<p>ORLOW G. OWEN MEN'S WEAR DRY CLEANING</p>



First Row (Left to Right): E. K. Starkweather, Wannitta Miller, Cecil Giles, Richard Larkins, Dorothy Heaton, Robert Rembowski, Allan Gotro, Ernestine Lewis, Harold Martens, Helen Winters, Virginia Reed. Second Row (Left to Right): Murna Hubbard, Marie Angove, Jeanne Atchison, Laura Jean Litsenberger, Eugene Hogan, Dick Simmons, Jack Taggart, Loretta Nagel, Elaine Sommers, Betty Cousins, Betty Jane Yerkes, Mary Ellen Burgess, Blanche Miller, Marilyn Cavell. Third Row (Left to Right): Edith Amerman, Carrel Carlson, Geraldine Johnston, Jane Van Atta, Jean Lyke, Doris Hubbard, Ida Marie Walker, Yvonne Taylor, Maxine Perkins, Natalie Whipple, Imogene Baughman, Jane Behen, Phyl Jones, Edith Hess. Back Row (Left to Right): Douglas McCluskie, Harold Schoultz, Sprague Lester, Robert Ross, Louis Eaton, Bob Boyden, Chandler Parker, Chuck Altman.

OPERETTA HISTORY

The popular Gilbert and Sullivan opera, "The Mikado," was chosen by the Northville High School choir under the direction of Leslie G. Lee for production this year. It was presented June 1 and 2 in the high school auditorium. Due to a lack of costumes the entire cast is not pictured.

The cast is as follows: The Mikado: Robert Rembowski; Nanki-Poo: Harold Martens and E. K. Starkweather; Ko-Ko: Cecil Giles; Pooh Bah: Richard Larkins; Pish Tush: Allan Gotro; Yum Yum: Helen Winters and Wannitta Miller; Peep Bo: Ruth Reed and Gail Horning; Pitti-Sing: Dorothy Heaton and Helen Harper; Katisha: Ernestine Lewis and Louise Alexander; Nee-Bah: Jack Taggart

The members of the chorus were: Charles Altman, Edythe Amerman, Marie Angove, Jeanne Atchison, Virginia Ault, Imogene Baughman, Jane Behen, Bob Boyden, Mary Ellen Burgess, Marilyn Cavell, Betty Carlson, Clara Christenson, Betty Cousins, Barbara Curtis, Louis Eaton, Ruth Frank, Norma Gotro, Lucille Graham, Thelma Grover, Marian Heatley, Edith Hess, Eugene Hogan, Doris Hubbard, Murna Hubbard, George Hunter, Geraldine Johnston, Phyl Jones, Sprague Lester, Faith Liebetreu, Laura Jean Litsenberger, Jean Lyke, Peggy McCollough, Douglas McCluskie, Blanche Miller, Loretta Nagel, Chandler Parker, Maxine Perkins, Julia Politz, Bob Ross, Leila Rossow, Harold Schoultz, Dick Simmons, Mary Smith, Elaine Sommers, Yvonne Taylor, Jane Van Atta, LeRoy Van Atta, Ida Marie Walker, Evelyn Wenker, Natalie Whipple, Betty Yerkes.